



Congratulations!

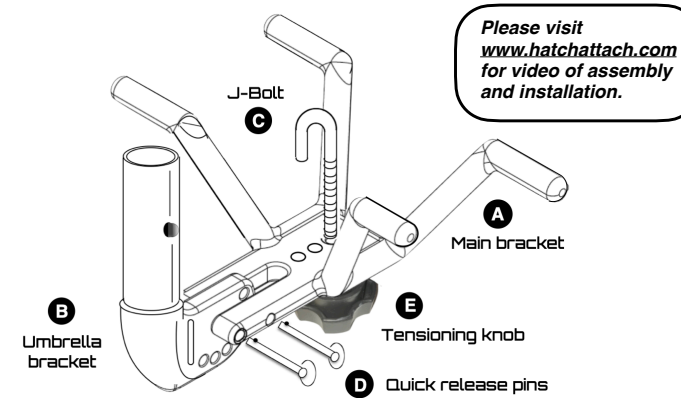
HatchAttach® would like to welcome you to a revolutionary experience in tailgating. By utilizing the universal latching mechanism of your automotive lift-gate, HatchAttach® provides unprecedented convenience in set up and take down when looking for protection from both sun and rain. Thanks for becoming a part of the HatchAttach® family.

When it comes to tailgating, we've got tailgating covered.™

Components:



Full Bracket Assembly



HatchAttach® has been designed to work on vehicles with the lock actuator located on the upper lift-gate. Vehicles whose locking actuator is located on the lower deck bed instead of the upper lift-gate - such as the BMW's 2013 and later - do not allow for installation as designed.

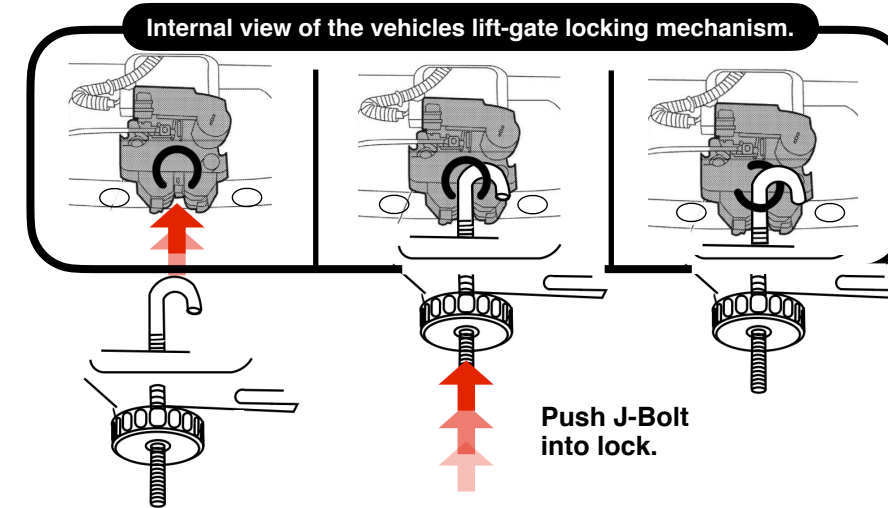
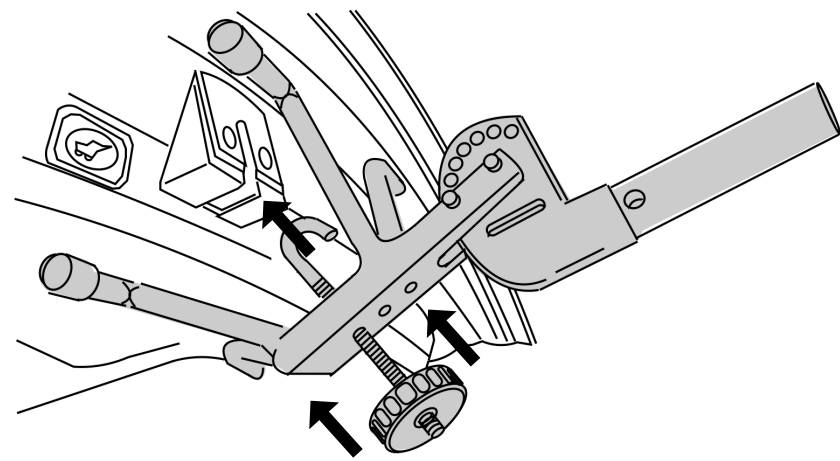
Installation:

- 1 Insert J-Bolt into one of the Main Bracket receiver holes. Multiple holes have been provided for best fit with your particular vehicles hatch lift-gate.
- 2 Twist the Tensioning Knob on to threaded portion of the J-Bolt. Keep loose until installation.
- 3 Insert the Umbrella Bracket between the Main Bracket arms. Insert one Quick Release Pin through the Main Bracket arm and one through the center Umbrella Bracket hole as shown.

Note: Umbrella Bracket may be flipped depending on specific vehicle application.

For vehicles with an automatic gate closure feature, turning this off will help to avoid unwanted gate closure during installation.

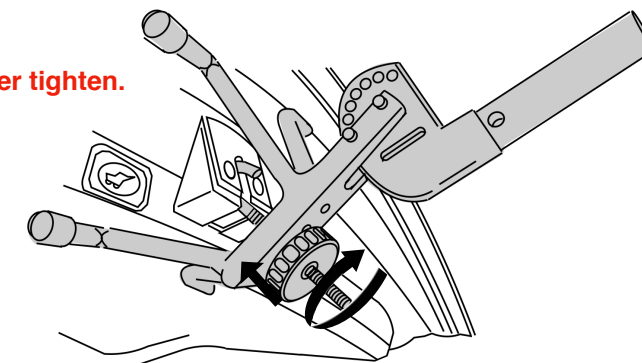
- 4 Press J-Bolt into the latch mechanism of your vehicles hatch lift-gate, sliding the entire unit tight to the underside of the hatch.



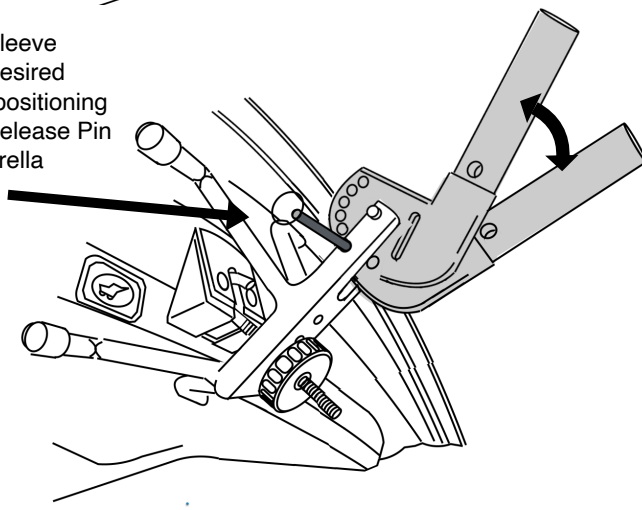
Pressing the J-Bolt fully into the lock opening of the lift-gate will automatically engage the lock, securing HatchAttach™ to the vehicles lift-gate. An audible locking sound may be heard from the lock once activated and secure.

- 5 Slightly tighten tensioning knob so that the Main Bracket feet are well seated against the underside of the hatch lift-gate.

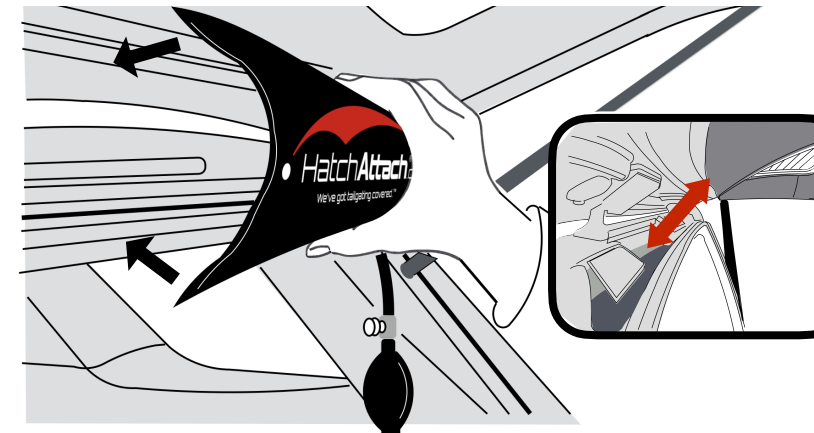
Do not over tighten.



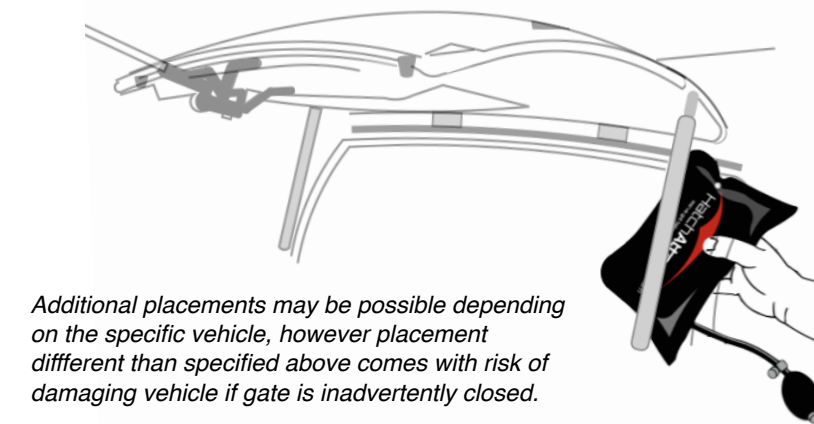
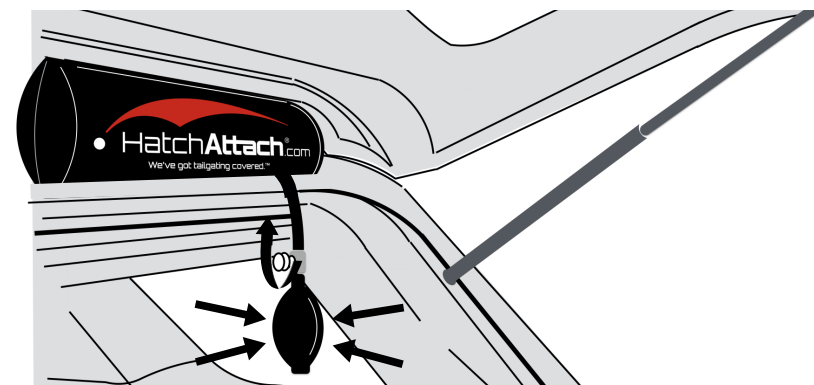
- 6 Adjust the sleeve bracket to desired angle by repositioning the Quick Release Pin on the Umbrella Bracket.



- 7 Insert the Air Pump Bladder between the open lift-gate and the opening of the rear cargo access area by cupping the bladder so that it nests securely between the molded channels of each. (Note: given the differences in some vehicle configurations, customization of placement may be required in order to protect lift gate-from inadvertent closure.)

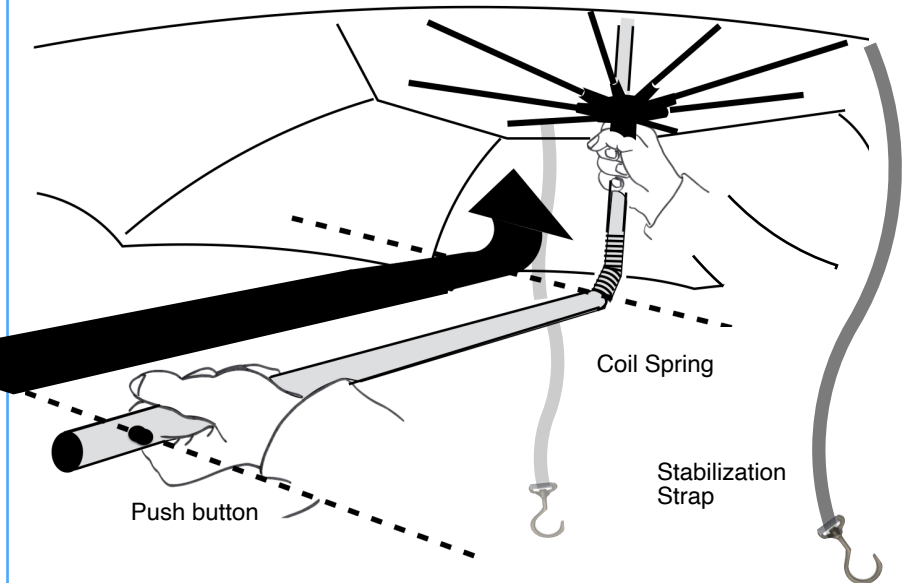


Tighten down the valve stem and pump the hand bulb in order to inflate the Air Pump Bladder, creating a secure brace between the vehicle and the open lift-gate. Proper inflation can help to impede the lift-gate from unwanted sagging or closure during use. Monitor for possible deflation during use.



Additional placements may be possible depending on the specific vehicle, however placement different than specified above comes with risk of damaging vehicle if gate is inadvertently closed.

- 8 Open the umbrella ensuring the straps do not get tangled. Once the Umbrella is fully opened, bend the shaft at the coil spring to the desired angle.

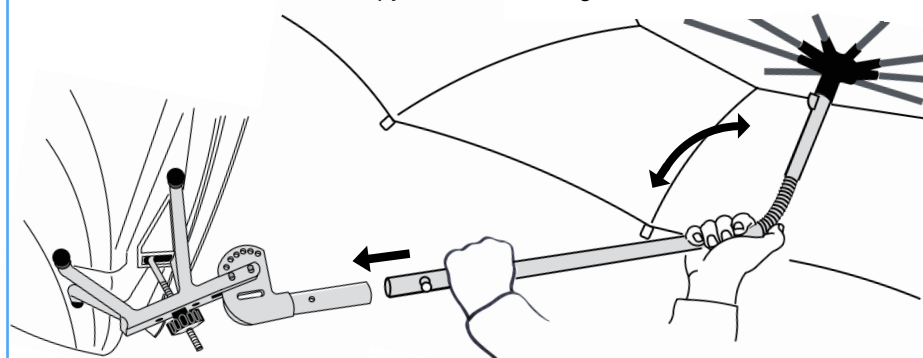


The Umbrella shaft push button needs to be located directly on the side of the shaft once the canopy is bent into the correct position. If the button is not located perpendicular to the bend of the shaft the canopy will not be parallel to the ground once the umbrella is inserted into the HatchAttach® bracket.

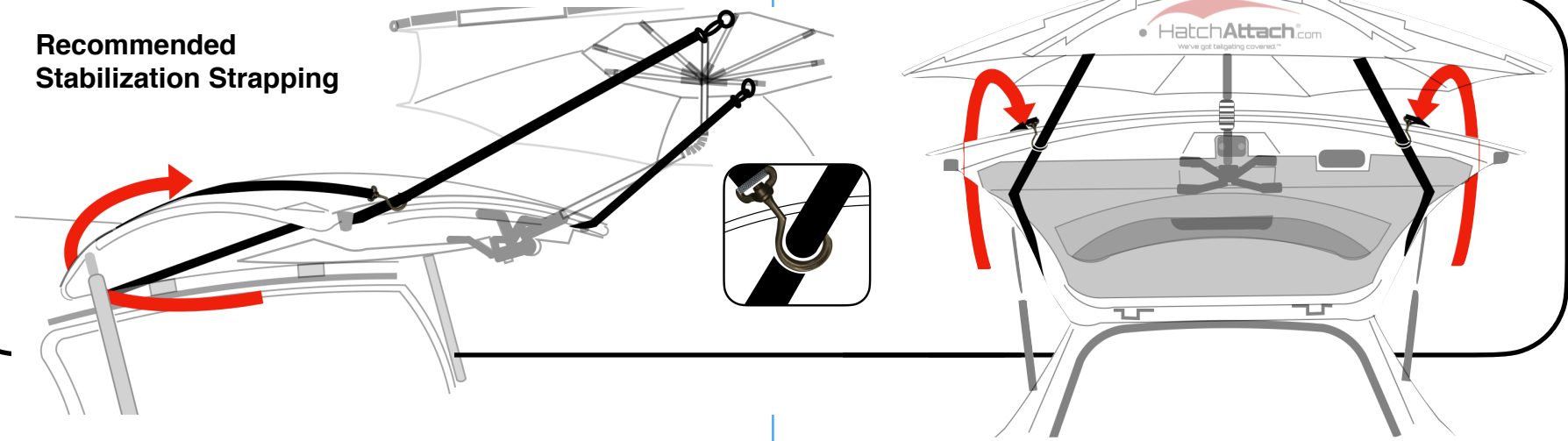
NOTE: Bending the Coil Spring in proper alignment with the push-button will ensure proper position of the canopy once installed into the Umbrella Bracket.

- 9 Insert the Umbrella shaft into the Umbrella Bracket so that the spring loaded push button on the Umbrella shaft engages with the Umbrella Bracket. The Umbrella Bracket can be further rotated up and down to accommodate desired canopy height when installed.

The Umbrella canopy can be adjusted by further bending the coil so that the canopy is level with the ground.



Recommended Stabilization Strapping



- 10 Split Rings are attached to the plastic brackets located on each of the 2 aluminum canopy supports located on the underside of the Umbrella Canopy. These rings are to be orientated to the farthest points from the vehicle when installed for more overall downforce on the canopy - which will serve to help prevent unwanted upward rotation and maintain the correct position of the Umbrella.

Once the canopy is inserted into the main HatchAttach® bracket, loop the hook end of the stabilization straps around the open lift-gate, guiding the strapping between the lift support struts and the bracket hinge that secures the liftgate to the automobile body. Bring the hook end over the top of the lift-gate and hook around the strapping that goes to the canopy as illustrated above.

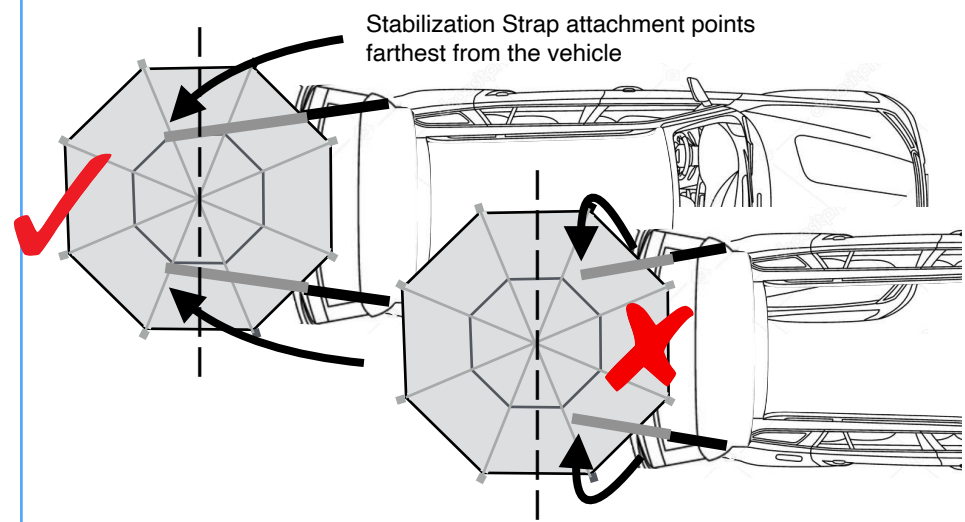
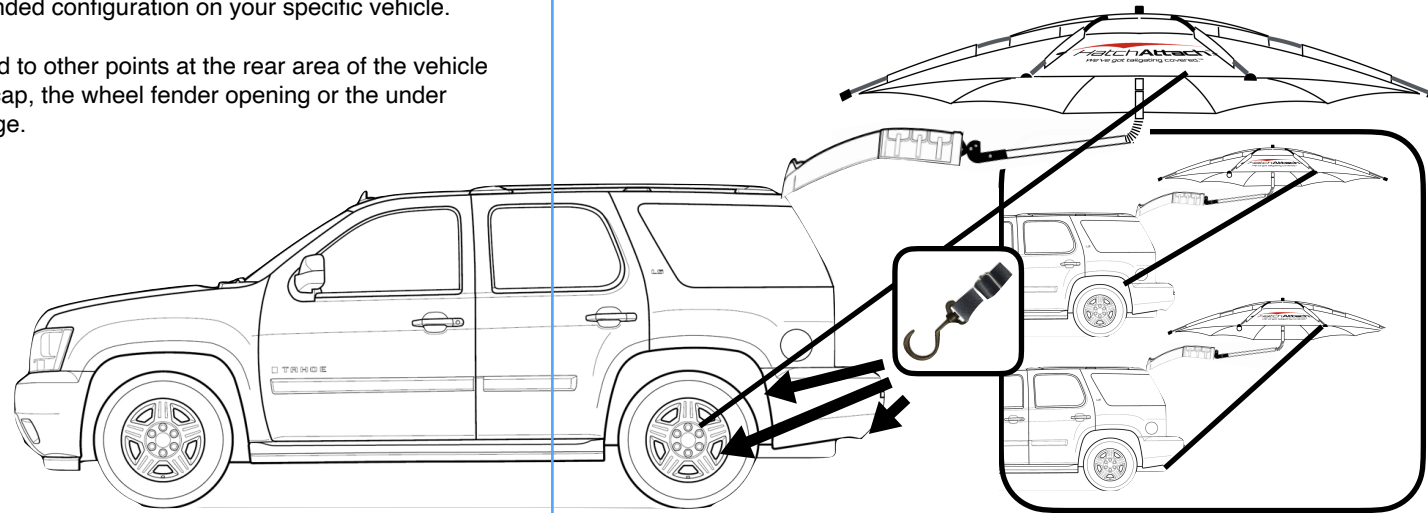
Tighten strapping to stabilize and secure the Umbrella.

Alternative Strapping Points

Additional attachment points may be considered if these provide more stability than the recommended configuration on your specific vehicle.

Hook ends may be attached to other points at the rear area of the vehicle including to the wheel hubcap, the wheel fender opening or the under side of the rear bumper edge.

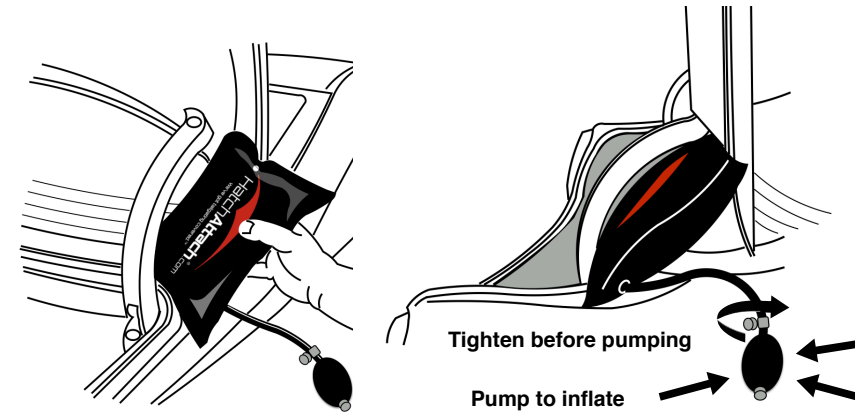
Note: Attachment points lower on the vehicle may provide additional canopy stability.



Stabilization Strap attachment points farthest from the vehicle

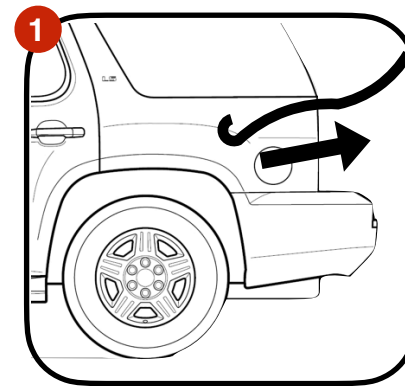
Sedan Configurations

With the trunk lid fully opened, find the best suited placement for the Air Pump Bladder that will allow for it to serve as a wedge keeping the trunk lid from closing while using HatchAttach®. Typically, the best placement is in the gap between the trunk support arms and the main body of the vehicle. Placement positions may vary depending on your particular vehicle configuration.

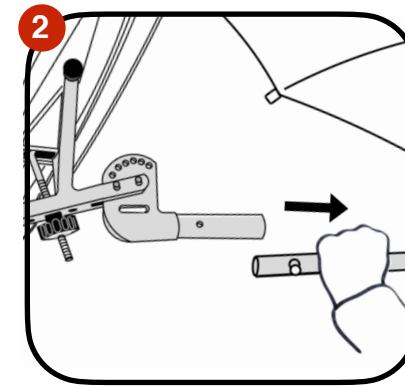


Removal:

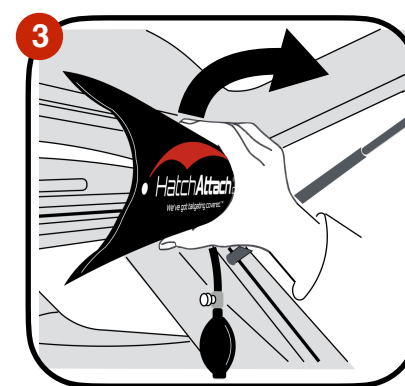
1. Unhook Stabilization Straps from vehicle (keeping them fastened to the canopy for convenient storage and re-use).
2. Remove the Umbrella shaft from the Umbrella Bracket by pressing the spring button to release.
3. Deflate the Air Pump Bladder by rotating the valve stem knob counter clockwise and remove.
4. Once the Umbrella has been removed, **loosen the Tensioning Knob to relieve pressure of the J-Bolt and Main Bracket with the vehicles lift-gate lock.** This is important to ensure the locking mechanism will be free to unlatch around the J-Bolt when disengaging the lift-gate lock in step 5.



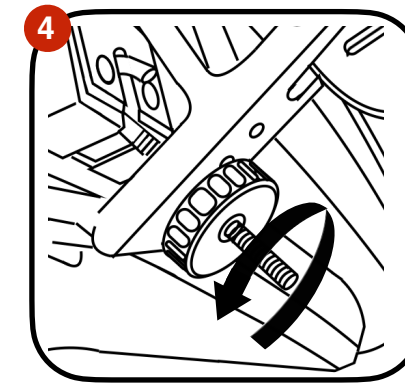
Unhook



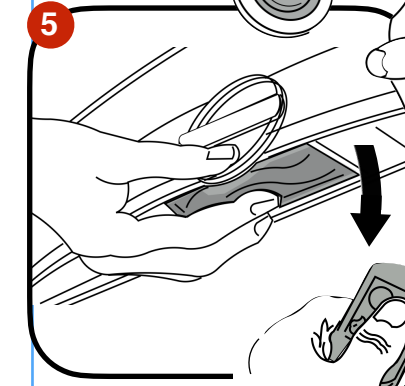
Detach



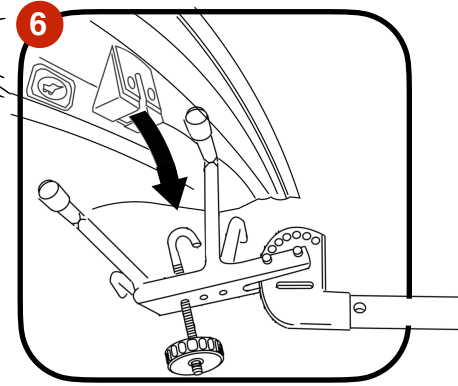
Remove



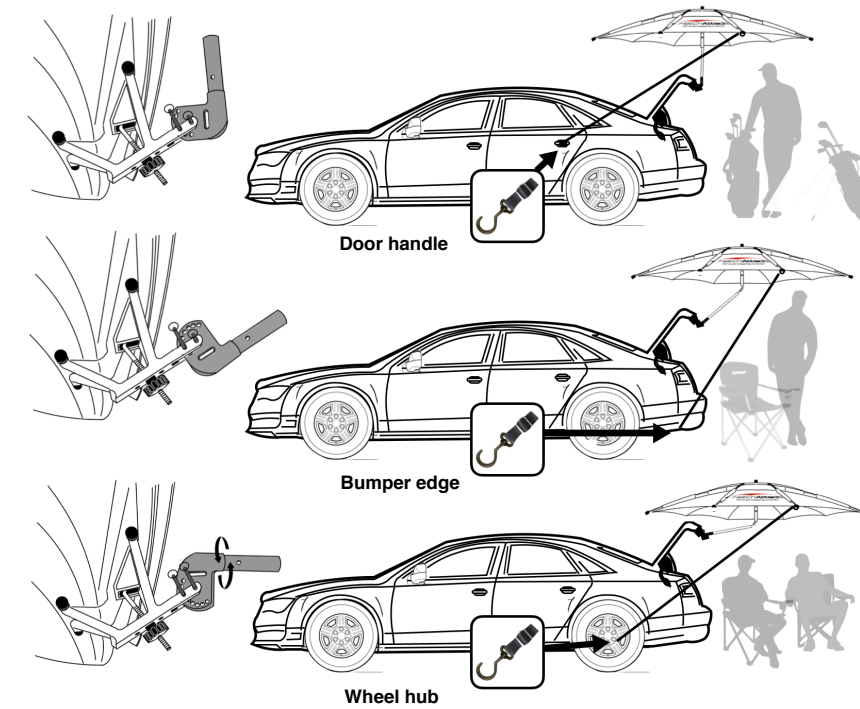
Loosen



Press



Release



Door handle

Bumper edge

Wheel hub

Protected by US Patent No. 10,377,318

5. Activate the rear lift-gate hatch release button or lever as you would when opening your hatch. This will disengage the locking mechanism, freeing the J-Bolt and the entire HatchAttach® Main Bracket Assembly from the vehicle. (Note: Pressing the unlatch/open rear lift-gate button on the key-fob may also be used for some vehicles).
 6. Once HatchAttach® is removed, manually close vehicle lift-gate or press the auto close button on the vehicle or key-fob.
 7. Test the lift-gate to ensure proper locking before moving the vehicle.
- If the auto close feature was disabled when the HatchAttach® was installed, re-engage in order to continue to open and close the gate via the push-buttons and key-fob when HatchAttach® canopy system is not in use.

Warning Do not use in windy conditions.

Wind: The biggest concern with any type of umbrella is wind. Although HatchAttach® incorporates an integrated wind vent as well as stabilization straps to reduce the impact that wind can deliver – it is still a concern when windy conditions occur. Caution should be taken relative to evaluating weather conditions that may pose a risk to the product, vehicles or persons. HatchAttach® is designed to provide a level of stability in "Light" to "Gentle" breezes as defined by NOAA and the National Weather Service, HOWEVER, it is not recommended to be used in wind/gust conditions that exceed 10 MPH. If you find that conditions change and the winds are more than initially expected after set-up, immediately detach the canopy and store for future use. The canopy should never be deployed while the vehicle is in motion.

Fire: Keep all flame and heat sources away from the HatchAttach® umbrella canopy. This canopy is not made with flame resistant fabric and will burn if in contact with any flame source.

Latch Failure: When properly installed, the J-bolt on the HatchAttach® bracket will engage with the lock actuator on the vehicles rear lift-gate securing the bracket in place. Proper fit and alignment should be checked for security once installed. If the tensioning knob on the J-bolt is overtightened, the user risks damaging the lock actuator which in turn may cause the lift-gate not to lock properly when closed. The vehicles lift-gate should be checked after each use of HatchAttach® to ensure proper and safe locking of the lift-gate when closed.

Personal Injury: If the HatchAttach® canopy is inadvertently dislocated from the vehicle for any reason (including unexpected wind-gusts), it can become a projectile that may pose risk to those around it. HatchAttach® is not responsible for any damage to the product, vehicles or persons including any potential 3rd party injury or property damage due to such causes.

Monitoring: It is important that the HatchAttach® system and the vehicle be continually monitored for proper performance while in use. This includes checking the bracket to ensure a proper snug fit with the vehicles locking mechanism. In addition, the stabilization straps should also be continuously checked and adjusted to ensure proper stabilization of the canopy when in use.

In no event shall HatchAttach® or its affiliates be liable for any direct, indirect, punitive, incidental or special consequential damages, to property or life, whatsoever arising out of or connected with the use or misuse of this product. This includes damages caused by wind, rain or other forces of nature, nor to accidental or deliberate damage of the product, nor to use of the product that does not conform with these product instructions.